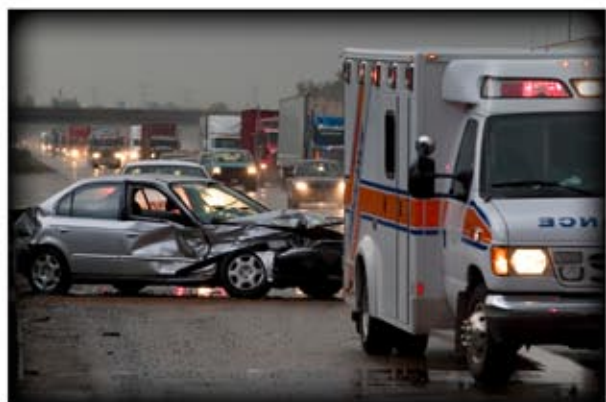


A Whole New RELM of Possibilities



KNG-P150**CMD**



ADVANCED FEATURES

FEATURES

Superior Audio Quality

The KNG comes equipped with a 1.6" diameter speaker, giving you the loudest and clearest sound with the least distortion.

Long Battery Life

The KNG works as long as you do, putting in 12+ hours of reliable communication everyday. Upgrade to the KAA0101, a compact 3600 mAH battery and boost your battery life to 16+ hours.

Custom Programming

Our intuitive menu system and feature set is fully customized to fit your everyday needs.

Waterproof IP67 Rating

Dust tight and waterproof - the KNG Portable is especially designed to withstand 30 minutes of water immersion at 1 meter depth.

MIL-STD-810C/D/E/F

The KNG Portable has gone through rigorous testing and meets or exceeds military requirements.

APCO Project 25

The KNG Portable meets or exceeds APCO P25 standards.

Large LCD Display

Day or night, get all the information at a glance with our bright 13 character, 5 line LCD Display.

Field or USB Programmable

Ease of use. The KNG can be programmed via USB port on virtually any PC.

Intrinsically Safe (IS)

the available electrical and thermal energy in the KNG-S is always low enough that ignition of hazardous atmospheres cannot occur.

1-6 Watts RF Power Output

Extend the radio's reach with up to 6 Watts of signal clarity. High and low settings are programmable by channel for power efficiency.

Command Groups

The KNG Command gives you full control with three command groups, 20 channels per group.

100 Programmable Quick Call ID's

Connect with select radio users easily and ASAP through RELM's Quick Call function.

Busy Channel Selections

Designed to indicate and prevent interference on active channels.

Channel/Priority/Group Scan

Find an available channel for communications: scan by channel, priority channel, or scan by groups, one group at a time.

Continuous Channel Selector

The KNG Command Radio is equipped with a continuous channel selector with virtual stop.

Legacy Cloning

The KNG Command is backwards cloning compatible. Clone your KNG to a RELM Legacy product, such as the DPH, and visa versa.

Problem Prevention Features

The Keypad lock prevents you from accidentally hitting a button that may activate functions unintentionally.

DVSI AMBE+2 Version 1.60 Vocoder

The version 1.60 Vocoder provides improved RF performance in a variety of degraded signal conditions. It also provides enhanced audio signal conditioning which improves system performance in the presence of background noise.




KNG-P150CMD

BUTTONS AND FUNCTIONS




ACCESSORIES



6 Bay Gang Charger
Rapidly charge up to 6 radios in under 90 minutes.
(KAA0301)



Extra Long Battery Life
Boost battery life to 16+ hours with our compact 3600 mAH Battery.
(KAA0101)




Clamshell
Load this clamshell with 8 'AA' batteries for emergency back-up power out in the field.



Speaker Mic
Placed on the shoulder, this speaker mic is quick and convenient.
(KAA0200)



Leather Carrying Case
This belt clip D Swivel case is built with tough leather and is easily detachable.
(KAA0420)



Nylon Carrying Case
This is the toughest case we sell. This is the one case that you'll never have to replace.
(KAA0455)

KNG-P150CMD

Specification	KNG-P150
Frequency Range	136 - 174 MHz
Channels w/ Variable Zone Size	512/2048
Zones (up to)	32/2048
Operating Voltage	10.8 V
Channel Spacing	12.5/25 kHz
Channel Increments	1.25 kHz
Operating Temperature	-30 °C ~ +60 °C
Dimensions (W x D x H)	2.5 x 1.8 x 5.5 in
Weight w/ Battery	16 oz
Standby Current Draw	110 mA
FCC ID	K95KNGP150
Receiver	
Sensitivity: 12db SINAD	-121 dBm
P25 Sensitivity: 5% BER	-121 dBm
Adjacent Channel Rejection	80 (70) dB
P25 Adjacent Channel Rejection	60 dB
Spurious and Images	80 dB
Intermodulation Rejection	78 dB
Audio Response	+1 dB/-3 dB
Audio Distortion at 500mW	1%
RX Current Draw	190 mA
Transmitter	
RF Power	6/5/1 Watts
Frequency Stability	1.5 ppm
Modulation Deviation	5 (2.5) kHz
Audio Distortion	3%
FM Hum & Noise	50 (44) dB
Spurious and Harmonics	75dB
Current Draw @ High Power	1600 mA
Audio Response	+1dB/-3dB



Narrowband specifications are denoted in parenthesis.



RELM Wireless Corporation T: 1-800-821-2900
 7100 Technology Drive F: 1-800-704-3177
 West Melbourne, FL 32904 E: sales@relm.com
www.relm.com